

## Expandable Prefabricated 20ft Flat Pack Container House Waterproof

### Our Product Introduction

for more products please visit us on [baodupanel.com](http://baodupanel.com)

#### Basic Information

- Place of Origin: Hebei, China
- Brand Name: BAODU
- Model Number: Container House
- Minimum Order Quantity: Discussible
- Price: Reasonable
- Packaging Details: In general, for steel structure, we use the steel frame packing to keep goods not to be broken. For sandwich panel and color steel sheet, we use the plastic packing. If the clients need special packing will according to their requirements.
- Delivery Time: 15 days
- Payment Terms: L/C, D/A, D/P, T/T, Western Union, MoneyGram
- Supply Ability: 100 Unit/Units per Week



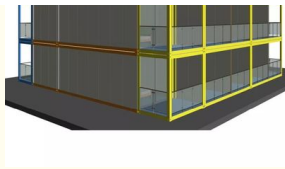
#### Product Specification

- Product Name: Prefab Waterproof Expandable Steel Container House Heat Insulation For Whole House
- Window: Aluminum Alloy Window
- Furniture: Optional
- Air Conditioner: Optional
- Keyword: Container House
- Size: 20ft/40ft
- Decoration: Optional
- Water System: Hot And Cold Water
- Material: Sandwich Panel, Steel
- Highlight: **Expandable 20ft flat pack container, Waterproof 20ft flat pack container, 20ft prefabricated container house**



#### More Images





## Product Description

### Prefab Waterproof Expandable Steel Container House Heat Insulation For Whole House

#### Product Description:

Container House is a folding and prefabricated house built with shipping containers. This eco-friendly house has a lifespan of up to 10 years and is waterproof for the whole house. It is equipped with an aluminum alloy window and hot and cold water system. Furniture is optional for this house. It is easy to assemble, move and transport, making it perfect for those who want a stylish, affordable, and eco-friendly home.

#### Features:

**Low construction cost:** Compared with traditional brick-concrete structure houses, the construction cost of container houses is lower. This is because containers can be produced in a production line and can be stacked together during transportation, reducing transportation costs and space occupancy.

**Strong durability:** The main structure of the container house is composed of steel materials, which has very strong durability and wind resistance and earthquake resistance. At the same time, the shell of the container house is treated with special anti-corrosion treatment to prevent rust and corrosion.

**Strong spatial plasticity:** Because the size and shape of the container house can be adjusted according to needs, it has strong spatial plasticity. The area of the house can be extended or reduced by splicing, stacking, etc.

**Simple and fast:** The construction speed of container houses is very fast, and it can be completed after several links such as prefabrication, processing, and assembly. At the same time, due to its modular design, disassembly and migration are also very convenient.

**Environmental protection and energy saving:** the materials of container houses can be recycled and reused, and will not produce a lot of construction waste, while energy consumption and carbon emissions can be reduced by improving insulation materials and adopting new energy equipment.

#### Applications:

BAODU Container House is a prefabricated container house with an attractive design style. It is made of sandwich panel and steel materials, with a lifespan of 10 years. It is available in 20ft and 40ft sizes and can be customized with optional furniture. It is a great choice for a variety of applications, from container homes, container living, folding container houses, and prefabricated container houses.

BAODU Container House is easy to install and requires minimum order quantity for discussion. The price is reasonable and the delivery time is 15 days. The product is packed in steel frame packing to keep goods from being broken and can also be packed according to the client's special requirements. There are various payment methods, including L/C, D/A, D/P, T/T, Western Union, and MoneyGram. The supply ability is 100 units per week.

#### Customization:





### Support and Services:

Our Container House products come with technical support and service. We provide comprehensive support, including product installation, repair and maintenance, and technical guidance. Our technical support team is available 24 hours a day, 7 days a week, to ensure that our customers receive the assistance they need. We also offer a variety of training programs to help customers get the most out of their Container House products.

### Packing and Shipping:

Packaging and Shipping of Container House.

The container house is securely packaged and shipped in a standard shipping container. The container is strong and weatherproof, ensuring the safe transport of the house. The container house can be shipped anywhere in the world, with quick and easy installation.

### FAQ:

Q: What is the Brand Name of the Container House?

A: The Brand Name of the Container House is BAODU.

Q: What is the Model Number of the Container House?

A: The Model Number of the Container House is Container House.

Q: Where is the Place of Origin of the Container House?

A: The Place of Origin of the Container House is Hebei, China.

Q: What is the Minimum Order Quantity for the Container House?

A: The Minimum Order Quantity for the Container House is Discussible.

Q: What are the Payment Terms for the Container House?

A: The Payment Terms for the Container House are L/C, D/A, D/P, T/T, Western Union, MoneyGram.



**Baodu International Advanced Construction Material Co., Ltd.**



+86 13717927965



chunlei.song@baodu.com



baodupanel.com

Room 1101, Building 6, Yard 9, Hongye Road, Daxing District, Beijing